



Barry Blandford Way, London, E3

BUTLER & STAG





**Guide Price - £300,000 to £325,000**

**Beautifully presented and ready to move into, this bright and modern one-bedroom apartment offers stylish living with a private balcony, ideally located in Bow, just moments from Devons Road DLR and the scenic Limehouse Cut canal. Perfect for first-time buyers, professionals, or investors, this home combines excellent transport connections with a tranquil, contemporary feel.**



## Leasehold

- One Bedroom Apartment
- Private Balcony
- 4th Floor
- Close to Devons Road DLR
- Very Well Presented
- Lift Access

### Property Features:

- Spacious double bedroom with fitted wardrobes
- Bright open-plan living and dining area
- Modern fitted kitchen with integrated appliances
- Sleek, contemporary bathroom
- Private balcony, ideal for relaxing or entertaining
- Well-maintained building with secure entry system
- Excellent condition throughout

The apartment boasts an open-plan layout, maximising space and natural light. The living area flows seamlessly onto a private balcony, offering a peaceful spot to enjoy your morning coffee or unwind in the evening. The kitchen is fully fitted with modern cabinetry and integrated appliances, while the bedroom is generously sized, with plenty of storage. A stylish bathroom, finished to a high standard, completes the property.

**Location:** Situated in a vibrant pocket of Bow, the apartment is just a short walk from Devons Road DLR, offering quick links to Canary Wharf, Stratford, and Bank. The Limehouse Cut is just around the corner, perfect for scenic walks, cycling, and enjoying East London's canal-side lifestyle.







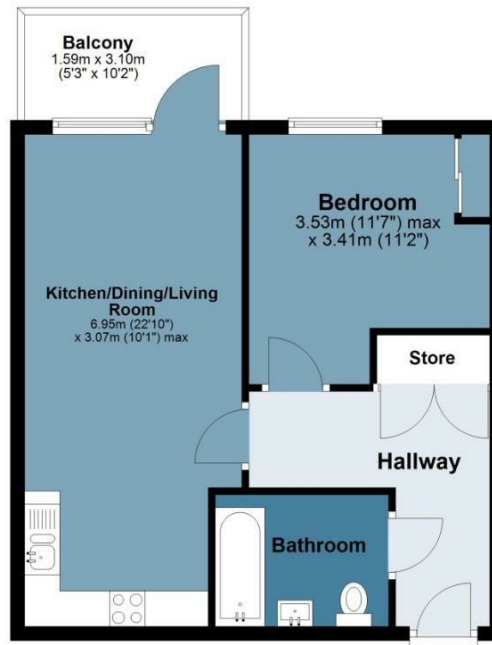
## Grenfell Court

Approx. Gross Internal Area 45.7 Sq M ( 491.9 Sq Ft )

BUTLER & STAG

### Fourth Floor

Approx. 45.7 sq. metres (491.9 sq. feet)



Measurements are approximate and for illustration purposes only. While we do not doubt the accuracy and completeness, we advise you conduct a careful independent assessment of the property to determine monetary value.  
© @modephoto.uk www.modephoto.co.uk

IMPORTANT NOTICE - These particulars have been prepared in good faith and they are not intended to constitute part of an offer or contract. We have not performed a structural survey on this property and the services, appliances and specific fittings have not been tested. All photographs, measurements, floor plans and distances referred to are given as a guide and should not be relied upon.

BUTLER & STAG

☎ 020 8102 1236

🏠 508 Roman Road, Bow, London, E3 5LU

✉ bow@butlerandstag.com

[www.butlerandstag.uk](http://www.butlerandstag.uk)